

EXPERIENCE WHAT YOU INSPIRED

**COMFORT.
PERFORMANCE.
SMART.**

CAT

**INTRODUCING NEW D3 SERIES SKID STEER
AND COMPACT TRACK LOADERS**

MADE FOR YOU

THE NEW CAT® D3 SERIES SKID STEER LOADERS AND COMPACT TRACK LOADERS WERE DESIGNED WITH YOU IN MIND. OPERATORS TOLD US WHAT THEY NEEDED TO HELP THEM WORK SAFELY AND COMFORTABLY, EVERY DAY.

THAT'S WHY THE D3 SERIES OFFERS:

- Smart Technology for unmatched integration and control with Smart Attachments
- Cab door that opens wider and a more spacious cab so you can work in comfort
- Smart Attachments to make grading and excavating tasks faster and easier
- A redesigned undercarriage that delivers improved stability for tasks such as grading, truck loading and material handling
- Enhanced drivetrain and fuel system for performance you can rely on
- Of all the Cat® loaders, the 272D3 XE and 299D3 XE models offer the highest performance and most advanced technology.



WHAT'S THE RIGHT MACHINE FOR YOU?

YOUR GUIDE TO CHOOSING BETWEEN A COMPACT TRACK LOADER AND A SKID STEER LOADER.

COMPACT TRACK LOADERS

Offering low ground pressure with minimal ground disturbance, compact track loaders deliver a stable platform you can use in all weather and ground conditions. This gives you more working days throughout the year.



SKID STEER LOADERS

With a lighter operating weight, faster travel speeds and fewer wear components, skid steer loaders cost less to buy and offer a durable design that's easy to service and maintain.



A MACHINE THAT WORKS AS HARD AS YOU

The D3 Series of machines are more robust than ever before. The fuel system is more durable, with one filter that makes it easier to maintain.

A stronger cab step, wider tread and a robust grab-handle help you get into the cab safely. These have been designed to withstand daily wear and tear.



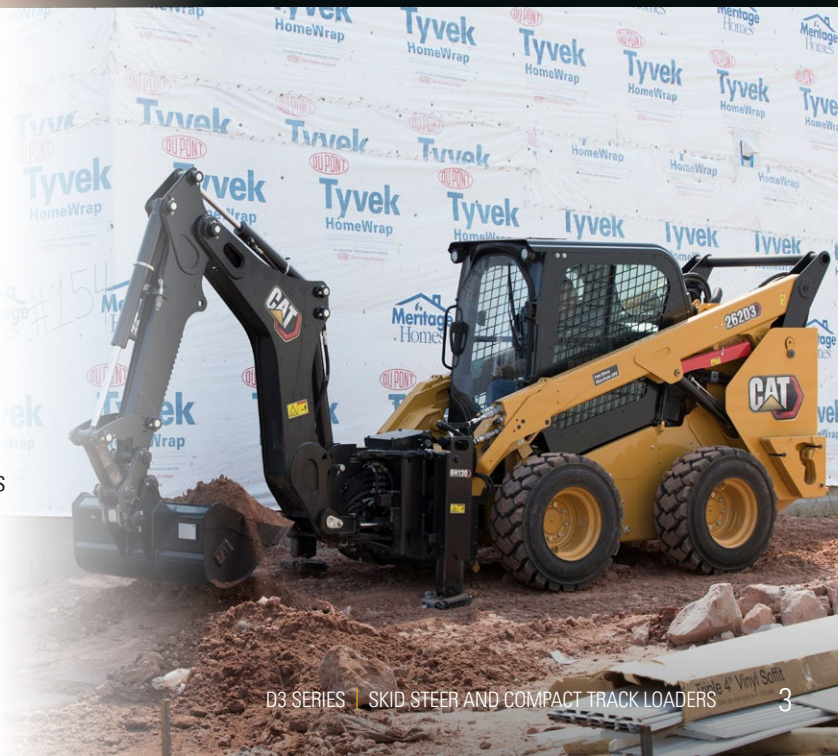
STABILITY AND COMFORT, EVERY TIME

Experience stability and comfort with the redesigned undercarriage on the D3 Series compact track loaders. It reduces the rocking or pitching motion when you're handling heavy loads, grading or dumping material into a truck. Suspension creates a comfortable ride, for all applications, every day.



ONE MACHINE FOR MULTIPLE TASKS

Use one machine more efficiently, for a range of tasks, thanks to Smart Technology. This technology enables the machine to automatically recognize when you connect a Smart Attachment, and converts the joysticks to match the control requirements of that attachment. Now you can minimize downtime and maximize productivity by operating the machine with Smart attachments easily, from the comfort of your cab.



CHOOSE YOUR SKID STEER LOADER

WITH SMART TECHNOLOGY YOU CAN QUICKLY SWAP ATTACHMENTS TO GET THE MOST OUT OF YOUR MACHINE.

EVERY MODEL OFFERS:

- Up to 40% wider door-opening and a sealed, pressurised cab with more legroom for the ultimate working environment
- in-cab advanced display so you can change the machine settings to suit you, and to match the task and attachment
- the ability to use a wide range of attachments, including Smart Attachments. Do a versatile range of tasks faster and more efficiently
- improved fuel filtration system – more durable design with less maintenance
- high-vis orange seatbelt, rotary beacon and rear-view camera for jobsite safety.

226D3

- ENGINE POWER C2.2 | 50 kW (67 hp)
- ARM TYPE Radial Lift
- ROC (% OF TIP LOAD) 50% | 703 kg (1,550 lb)
- HYDRAULIC FLOW 69 lpm (230 bar) | Opt. 99 lpm
- CAB HEIGHT 2,028 mm (80 inch)
- MAX HINGE PIN HEIGHT 2,818 mm (111 inch)



232D3

- ENGINE POWER C2.2 | 50 kW (67 hp)
- ARM TYPE Vertical Lift
- ROC (% OF TIP LOAD) 50% | 865 kg (1,900 lb)
- HYDRAULIC FLOW 69 lpm (230 bar) | Opt. 99 lpm
- CAB HEIGHT 2,029 mm (80 inch)
- MAX HINGE PIN HEIGHT 3,001 mm (118 inch)



236D3

- ENGINE POWER C3.3 | 55 kW (74 hp)
- ARM TYPE Radial Lift
- ROC (% OF TIP LOAD) 50% | 818 kg (1,800 lb)
- HYDRAULIC FLOW 76 lpm (230 bar) | Opt. 112 lpm
- CAB HEIGHT 2,082 mm (82 inch)
- MAX HINGE PIN HEIGHT 3,122 mm (123 inch)





242D3

- ENGINE POWER C3.3 | 55 kW (74 hp)
- ARM TYPE Vertical Lift
- ROC (% OF TIP LOAD) 50% | 1,000 kg (2,200 lb)
- HYDRAULIC FLOW 76 lpm (230 bar) | Opt. 112 lpm
- CAB HEIGHT 2,111 mm (83 inch)
- MAX HINGE PIN HEIGHT 3,076 mm (121 inch)



246D3

- ENGINE POWER C3.3 | 55 kW (74 hp)
- ARM TYPE Radial Lift
- ROC (% OF TIP LOAD) 50% | 1,000 kg (2,200 lb)
- HYDRAULIC FLOW 86 lpm (230 bar) | Opt. 121 lpm
- CAB HEIGHT 2,111 mm (83 inch)
- MAX HINGE PIN HEIGHT 3,154 mm (124 inch)



262D3

- ENGINE POWER C3.3 | 55 kW (74 hp)
- ARM TYPE Vertical Lift
- ROC (% OF TIP LOAD) 50% | 680 kg (1,499 lb)
- HYDRAULIC FLOW 86 lpm (230 bar) | Opt. 121 lpm
- CAB HEIGHT 2,111 mm (83 inch)
- MAX HINGE PIN HEIGHT 3,172 mm (125 inch)



272D3

- ENGINE POWER C3.8 | 73 kW (98 hp)
- ARM TYPE Vertical Lift
- ROC (% OF TIP LOAD) 50% | 1,570 kg (3,450 lb)
- HYDRAULIC FLOW 86 lpm (280 bar) | Opt. 121 lpm
- CAB HEIGHT 2,094 mm (82 inch)
- MAX HINGE PIN HEIGHT 3,229 mm (127 inch)



272D3 XE

- ENGINE POWER C3.8 | 82 kW (110 hp)
- ARM TYPE Vertical Lift
- ROC (% OF TIP LOAD) 50% | 1,680 kg (3,700 lb)
- HYDRAULIC FLOW 150 lpm (280 bar)
- CAB HEIGHT 2,133 mm (84 inch)
- MAX HINGE PIN HEIGHT 3,265 mm (129 inch)

CHOOSE YOUR COMPACT TRACK LOADER

WITH UNIQUE CAT® SUSPENSION, THE D3 SERIES COMPACT TRACK LOADERS PROVIDE A COMFORTABLE WORKING ENVIRONMENT TO HELP YOU TACKLE ANY TASK.

EVERY MODEL OFFERS:

- Up to 40% wider door-opening and a sealed, pressurised cab with more legroom for the ultimate working environment
- a Cat torsion suspension undercarriage creates comfort and stability for the most demanding tasks
- in-cab advanced display so you can change the machine settings to suit you, and to match the task and attachment
- the ability to use a wide range of attachments, including Smart Attachments. Do a versatile range of tasks faster and more efficiently
- two-speed travel as standard with one-speed mode for high-torque performance
- improved fuel filtration system – more durable design with less maintenance
- high-vis orange seatbelt, rotary beacon and rear-view camera for jobsite safety.

239D3

- ENGINE POWER C2.2 | 50 kW (67 hp)
- ARM TYPE Radial Lift
- ROC (% OF TIP LOAD) 35% | 695 kg (1,530 lb)
50% | 995 kg (2,194 lb)
- HYDRAULIC FLOW 69 lpm (230 bar) | Opt. 99 lpm
- CAB HEIGHT 2,034 mm (80 inch)
- MAX HINGE PIN HEIGHT 2,824 mm (111 inch)



249D3

- ENGINE POWER C2.2 | 50 kW (67 hp)
- ARM TYPE Vertical Lift
- ROC (% OF TIP LOAD) 35% | 790 kg (1,750 lb)
50% | 1,130 kg (2,491 lb)
- HYDRAULIC FLOW 69 lpm (230 bar) | Opt. 99 lpm
- CAB HEIGHT 2,039 mm (80 inch)
- MAX HINGE PIN HEIGHT 3,002 mm (118 inch)



259D3

- ENGINE POWER C3.3 | 55 kW (74 hp)
- ARM TYPE Vertical Lift
- ROC (% OF TIP LOAD) 35% | 915 kg (2,010 lb)
50% | 1,305 kg (2,877 lb)
- HYDRAULIC FLOW 76 lpm (280 bar) | Opt. 112 lpm
- CAB HEIGHT 2,111 mm (83 inch)
- MAX HINGE PIN HEIGHT 3,075 mm (121 inch)





279D3

- ENGINE POWER C3.3 | 55 kW (74 hp)
- ARM TYPE Radial Lift
- ROC (% OF TIP LOAD) 35% | 1,010 kg (2,220 lb)
50% | 1,445 kg (3,186 lb)
- HYDRAULIC FLOW 86 lpm (280 bar) | Opt. 121 lpm
- CAB HEIGHT 2,113 mm (83 inch)
- MAX HINGE PIN HEIGHT 3,173 mm (125 inch)



289D3

- ENGINE POWER C3.3 | 55 kW (74 hp)
- ARM TYPE Vertical Lift
- ROC (% OF TIP LOAD) 35% | 1,315 kg (2,890 lb)
50% | 1,880 kg (4,145 lb)
- HYDRAULIC FLOW 86 lpm (280 bar) | Opt. 121 lpm
- CAB HEIGHT 2,113 mm (83 inch)
- MAX HINGE PIN HEIGHT 3,178 mm (125 inch)



299D3

- ENGINE POWER C3.8 | 73 kW (98 hp)
- ARM TYPE Vertical Lift
- ROC (% OF TIP LOAD) 35% | 1,580 kg (3,480 lb)
50% | 2,087 kg (4,601 lb)
- HYDRAULIC FLOW 86 lpm (280 bar) | Opt. 121 lpm
- CAB HEIGHT 2,125 mm (84 inch)
- MAX HINGE PIN HEIGHT 3,208 mm (126 inch)



299D3 XE

- ENGINE POWER C3.8 | 82 kW (110 hp)
- ARM TYPE Vertical Lift
- ROC (% OF TIP LOAD) 35% | 1,620 kg (3,560 lb)
50% | 2,315 kg (5,104 lb)
- HYDRAULIC FLOW 150 lpm (280 bar)
- CAB HEIGHT 2,125 mm (84 inch)
- MAX HINGE PIN HEIGHT 3,208 mm (126 inch)

FIND SERVICE PARTS AND OTHER ATTACHMENTS

Shop for more than 1.4 million Cat parts and attachments at parts.cat.com

Browse for whole range of attachments and machines at cat.com



PARTS



ATTACHMENTS



MACHINES

GAME-CHANGING TECHNOLOGY

Make one machine more versatile than ever with Smart technology and attachments that are exclusive to Caterpillar. Smart Technology changes the joystick controls to match the needs of the connected Smart Attachments. This technology also provides information and control screens on the Advanced Display monitor.

Now you can handle a wide variety of tasks with just one machine.

1. SMART BACKHOE

All the functionality of an excavator and a backhoe in a skid steer

- Take on a range of tasks, including trenching, digging footings, forming and maintaining ditches
- Auxiliary-hydraulic system allows pairing with hydro-mechanical work tools, including hammers, thumbs, augers, and vibratory compactors
- Hydraulic side-shift function makes it easy to use the backhoe close to walls and other obstacles.

2. SMART DOZER BLADE WITH ASSIST

Cut, grade and finish with the Smart Dozer Blade with Assist

- Use joysticks to control the attachment like a full-size dozer for blade tilt, blade raise/lower and blade angle.
- A trapezoid design with angled end bits allows flush-cutting against vertical surfaces when the blade is fully tilted
- Assist feature makes it easier to achieve a smoother grade with fewer passes.

3. SMART GRADER BLADE WITH ASSIST

Giving you excellent stability with grader functionality

- Joysticks convert to intuitively control the grader blade for blade tilt, raise/lower and angle
- Ability to add 2D and 3D grading systems
- Assist feature allows you to work faster and more accurately with Cross Slope control.

